



140 MILLENNIUM SUPER YACHT
Tri-Deck Luxury Hi- Speed Yacht

Length Overall: 139'3 (42.40m)	Length Waterline: 107'3" (32.75m)
Beam:27'1" (8.250m)	Draft: 6'2" (1.88m)
Displacement: 128 tons@full load	
Cruising Speed: 45 knots aprox.	Maximum Speed : 70 knots aprox.
PROPULSION	
Twin Paxman 18VP185 Diesels (5300 Hp) Driving Maneuverable Lipps Water Jets Twin Lycoming Jet Turbines (TF40) (4700 Hp) Driving Fixed Lipps Water Jet Booster	
Fuel Capacity: 15,000 US Gallons	Fresh Water Capacity: 1,500 US Gallons
Hull : Plating: Alustar Aluminum Modified Full Planning Hull With Deep Vee Entry	





INTRODUCTION

The Millennium 138' Super Yacht will be powered by twin Paxman main engines, producing a combined horsepower of 10,870 and a TF80 Lycoming turbine providing an additional 9,200 hp. It is anticipated that the 138' will attain a top speed of 69-70 knots, a cruise speed of 38 knots, and a maximum range of 3,800 nm. The drive system utilizes three Lips Waterjets. Electric power will be supplied by twin Kilopack generators.

The super yacht's General Arrangement Plan includes a spacious Grand Salon, formal Dining Room, fully equipped Country Kitchen, a Master's Sitting Room, and sumptuous Master Suite on the Main Deck ? a magnificent V.I.P. Suite, a luxurious Double Guest Suite, two roomy Twin Guest Suites, Crew Quarters, Engine Room, and Utility Room on the Lower Deck ? and a spectacular Sky Lounge and enclosed Pilot House with private Captain's Quarters on the Upper Deck. Owners' and guests' Baths are all ensuite. (Accommodations are sketched in some detail on the following pages of this release.)

A sophisticated Modernist architecture, advanced naval engineering, sensitive handling, superb performance, opulent accommodations, and speed distinguish all Millennium Super Yachts. Headquartered in Riviera Beach, Florida, the yacht maker has assembled a team of professionals with decades of combined manufacturing and marketing experience. They enjoy global partnerships with the world's leading suppliers of highest-quality equipment and appliances.

Like the 118' Super Yacht launched in January 2002, the Millennium 138' Super Yacht was designed and styled by the eminent naval architect Frank Mulder of the Netherlands.

The interior is designed and styled by London's Evan K. Marshall, noted for his imaginative handling of interior space. The yacht will be built in Holland.

Like Millennium's other super yachts, the 138' invokes the radius as a principal design element, carrying it through the superstructure's and hull's curved surfaces, the elegantly swept window treatments, the vaulting of the bar and other custom furniture, the custom couches – and, perhaps most conspicuously, in the grand staircase that spirals gracefully amidship from the Lower Deck to the Sky Lounge and enclosed Pilot House located above the Main Deck.







MAIN DECK

Entering the Foyer from the expansive Aft Deck, one may confess to astonishment at the intricately inlaid stonework, the matched crystal cabinets, and sensation of light and airy space beyond. The Grand Salon is deserving of the name, with a formal arrangement of twin custom couches, chairs and ottomans, facing across the Salon's centerpiece: a magnificent oval cocktail table fashioned of etched glass with gold-leaf inlays and a base finished in silver leaf. The floor here is covered in 100% New Zealand wool carpeting. The wood of the elegant cabinetry, trim, and bulkheads is Bovana Burl finished with pearlized lacquer. It will be used throughout the yacht in the interests of achieving an interior harmony and fluent articulation of space.

The plan is open: an exquisitely detailed cadenza separates the Grand Salon from the midship Dining Room. Here one will admire the granite floor bordered with marble – both of which combine in a cartouche to define the space without recourse to partitioning. The cadenza houses a pop-up swivel plasma television. The cadenza and patterned floor reaffirm the radius architectural theme, carried throughout the yacht. Curved at its far ends, the glass-topped dining table with gold-leafed inlays reiterates the motif. It seats 10.

Located on the portside, at the forwardmost area of the Dining Room, is the large Country Kitchen. It will be equipped with all appliances and conveniences necessary to the creation of the most complex culinary affair. Countertops and floor are granite. Working surfaces and storage are ample. Every area throughout the yacht, from Foyer to Pilot House, will be generously provided with storage – much of it artfully concealed as Evan Marshall and the Millennium design team demonstrate the most ingenious use of space. The Country Kitchen includes a large Dinette.

One-third of the 140's Main Deck is devoted to the Master Suite, located in the forwardmost part of the yacht, in order that the fortunate owners may enjoy the breathtaking view through immense windows, port and starboard. Here is a king-sized island bed flanked by handsome burled-wood night tables, a built-in bookcase, finely crafted cabinetry and wardrobes, a curved custom couch, and state-of-the-art entertainment center. The ensuite Bath Room with marble floor and countertops is spacious and equipped with Jacuzzi tub, his and her toilets, a bidet, and a shower unusually generous in size – all, of course, influenced by the overall radius design element.







LOWER DECK

The elegant spiral staircase descends from the Dining Room to the granite-and-marble Lower-Deck Foyer. The Foyer leads to the V.I.P. Suite and the Double Guest Suite – both situated aft beneath the Dining Room – and the two additional Twin Guest Suites that lie forward, below the Country Kitchen and Master’s Sitting Room.

The portside V.I.P. Suite is generously proportioned and provided with amenities, such as an island king-sized bed, cabinetry, closets, wardrobes, a complete entertainment center, and a curved settee. Its private Bath has marble floor and countertops, elegant fixtures, and a roomy, glass-enclosed shower.

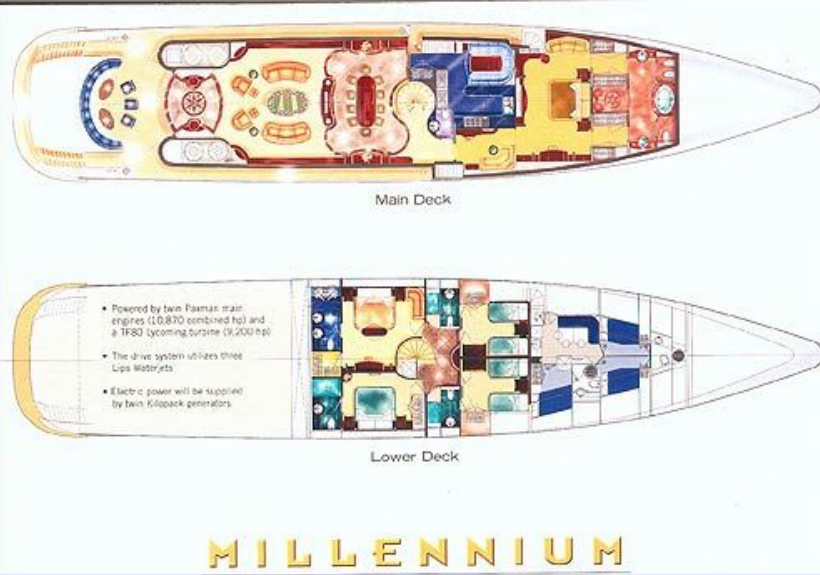
The starboard-side Double Guest Suite is nearly the equal to the V.I.P. It includes an island king-sized bed, handsome furniture and built-ins, generous closets, lockers, and drawer space, an entertainment center, and nicely appointed ensuite Bath.

There are two large Twin Guest Staterooms with private Baths – one to port, another to starboard. They come with comfortable single beds, separated by nightstands, closets, and other convenient storage areas. The 138' Super Yacht is designed for lengthy on-the-water stays, and Millennium has not stinted on either amenities or storage space in any area of the vessel.

Located immediately forward of the Twin Guest Staterooms’ bulkhead is the Crew Quarters – accessed by a stairway from the Main Deck’s portside passageway. A full crew complement will be comfortably accommodated, in three roomy cabins – each with double bed, abundant closet and drawer space. Two large Baths serve the crew. The captain, as noted below, has his separate quarters on the Upper Deck, inside the enclosed Pilot House. There is a well-equipped modern Galley with dinette table in the Crew Quarters.

The aft third of the Lower Deck is devoted to the Engine Room and utility areas. The Engine Room will be large – generously provided with all requisite equipment and systems to allow the Millennium 138' to take full advantage of her transoceanic range. Systems are, in many cases, redundant in the interests of reliability and security.





UPPER DECK: PILOT HOUSE & 'SKY LOUNGE'

The Millennium 140' Super Yacht is designed with an Upper Deck of superlative proportions and appointments. Forward, is the fully enclosed Pilot House with a Command Station provided with the choicest of electronics, navigation, and communications equipment. Visibility through the wraparound windscreen is superb. Immediately behind the helm station is a large lounge area, curved in concert with the radius motif general throughout the yacht. The captain of the 138' Super Yacht will enjoy a private cabin aft of the Pilot House. Supplementing the formal Dining Room on the Main Deck is the luxurious and spacious 'Sky Lounge.' It features an elegantly curved starboard side wet bar. A round gaming table with four barrel chairs lies midway between the bar and the bulkhead separating the Sky Lounge from the Pilot House. On the portside are an enormous couch, two armchairs, taborets, and an opulent oval cocktail table – identical to that found below in the Grand Salon.



TRI-DECK LAYOUT

Helm Deck: Encompasses primary navigation bridge, Captain's cabin, Engineer's cabin, sky lounge with wet bar and entertainment center, and aft deck lounging area with retractable sun awning. Helm area includes Helm seat, two double wide observer seats, fully integrated helm station and electronics, Helm Dinette (seats 4-6)

Main Deck: Luxurious owners cabin forward with walk in closets, his and her baths, Jacuzzi Tub, and shower, galley with country kitchen (seats 8) appliances include SubZero and Miele, dining room (seats 10), main saloon, entry foyer, and aft deck entertainment area with built in settees and tables and retractable sun awning.

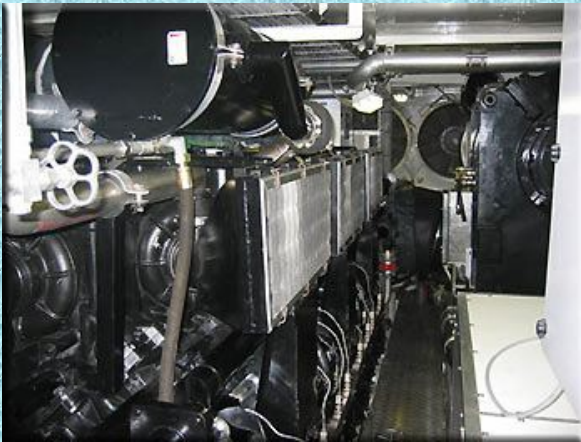
Lower Deck: Crew quarters forward with two twin bunk rooms, and crew lounge. Guest quarters include two twin guest staterooms, one double guest stateroom with 3 large hull windows, and a luxurious king VIP stateroom with 3 large hull windows. Engine room aft.

Interior Furnishings are built to full scale luxury standards with burl walnut and lacquer finishes utilizing techniques from the luxury aircraft industry, including nomex honeycomb core materials, marbles and granites bonded to aluminum honeycomb backing and other weight saving techniques and materials.

GENERAL CONSTRUCTION

The 140' Super Yacht's hull, decks, and superstructure are constructed of Alustar aluminum, making it possible to build the hull lighter without losing strength. Overall length is 138' (42 m). Fuel capacity is 15,000 U.S. gallons. The unusual individual with a taste for elegance will discover, in a Millennium Super Yacht, the ultimate shape of his desire. Millennium's pleasure is to build a unique vessel to contain the spirit and the imagination of its clients. Millennium Super Yachts are "custom" in the truest sense of the word. In addition to the 138' Super Yacht, Millennium builds an 80' Express Café Cruiser, an 80' Flybridge Sport Yacht, a 92' Sport Fish, and a 118' Super Yacht. Together they further the legacy that began with Octopussy, Moonraker, and Thunderball and an uncompromising allegiance to old-world craft, power, and the industry's most advanced design imperatives.





For More Information Please

[CLICK HERE TO E-MAIL US](#)

Or click on the "[Contact Us](#)" Link at the bottom of this page.

Please write in the Subject Field which vessel and model you are inquiring about, Thank You

[TOP](#)

